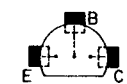
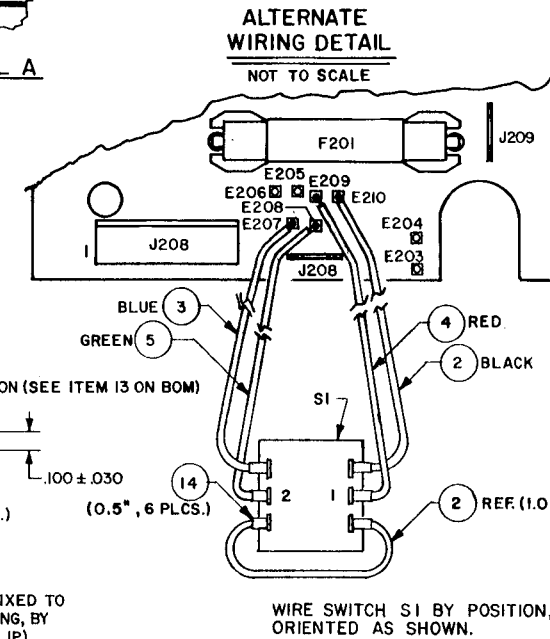
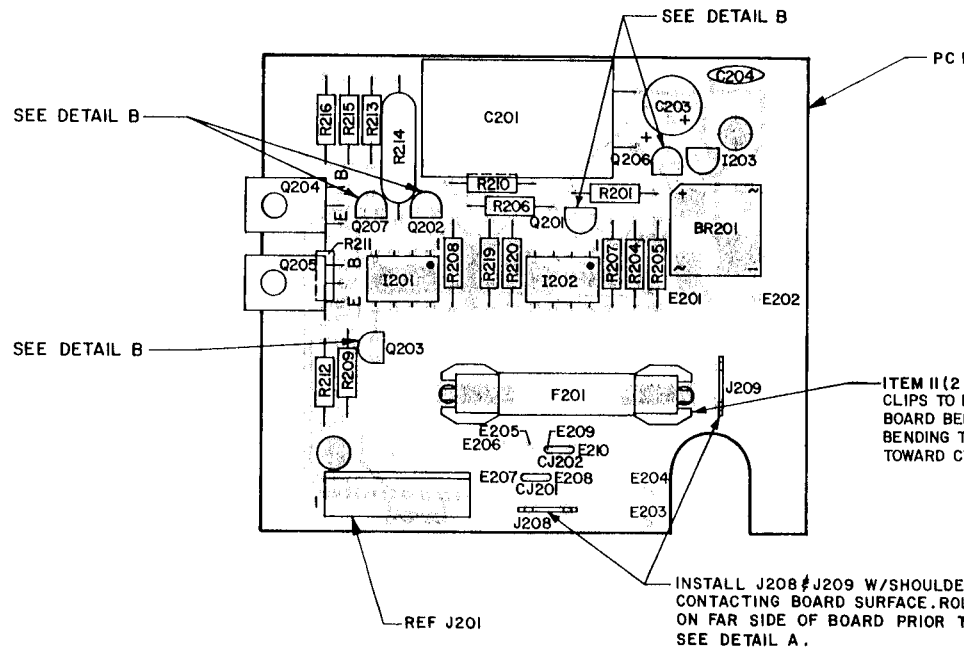
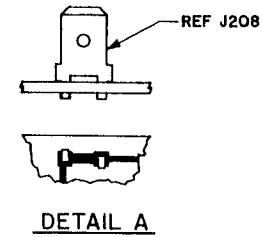
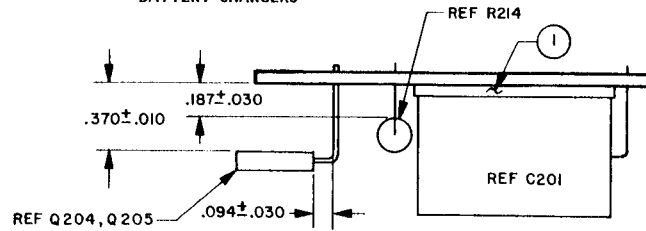


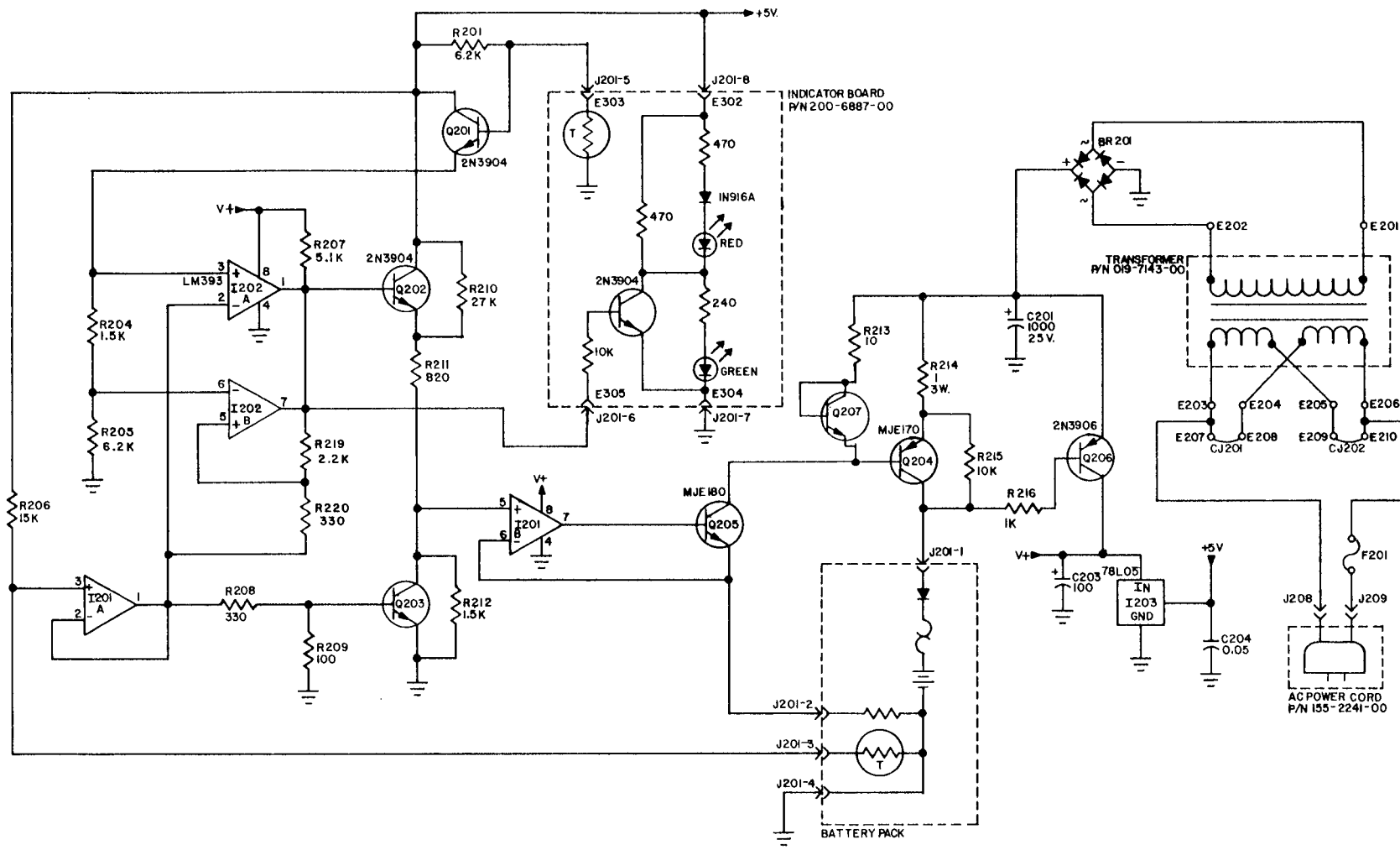
**BENDIX/KING**  
LAA 300 SERIES  
BATTERY CHARGERS



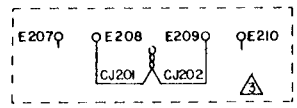
- Q207
- Q202
- Q203
- Q201
- Q206

NOTES: UNLESS OTHERWISE SPECIFIED;  
1. BOARD SILKSCREENING NOT SHOWN FOR CLARITY.

FIGURE 6-7 CHARGER BOARD ASSEMBLY  
(Dwg No 300-6886-20 Rev 3)



NOTES: UNLESS OTHERWISE SPECIFIED;  
 1. RESISTOR VALUES ARE IN OHMS, 1/4W, ±5%.  
 2. CAPACITOR VALUES ARE IN MICROFARADS.  
 ⚠ FOR 242 VAC OPERATION:  
 CUT CJ201 NEAR E207, CUT CJ202 NEAR E210,  
 TWIST THE ENDS TOGETHER AND SOLDER.



SCHEMATIC  
 1)